

LOCAL EVENTS

CALENDAR

Senior's Day at Pineview Hall

Every Wednesday 10:00am
Pineview Hall
963.7427 or 649.8281

PG Hospice Spring Fashion Show

Wednesday March 3rd 6:00pm
Coast In of the North
562.2323

Billy Talent

Monday March 8th 6:45
CN Centre
www.ticketmaster.ca

Spring Home & Leisure Show

Friday March 12th to Sunday March 14th
CN Centre
561.7789

Kate Maki & Brent Randall

Tuesday March 16th 8:00pm \$10
Art Space
www.katemaki.com

RV Show

Friday March 19th 5:00pm
CN Centre
www.cncentre.ca

Hedley feat. Stereos

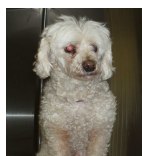
Thursday March 25th 6:30pm
CN Centre
www.ticketmaster.ca

Motorcycle and ATV Show

Friday March 26th to Sunday March 28th
CN Centre
561.7789

DENTAL MONTH WAS A *SPARKLING* SUCCESS

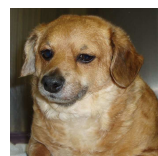
We'd like to extend a very big thank you to all those brave cats and dogs that came to see us during the month of February!! Happy chewing... ☺



Buffy Kwiatkowski



Coquette Landry



Koko Litzen



Indiana Jones



Gus Thorpe



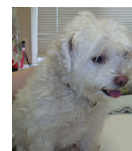
Lola Trenholm



Murphy Stowell



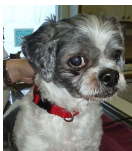
Meg Brinson



Missy Lefebvre



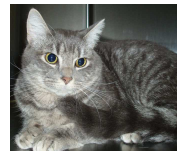
Maximus Landry



Murphy Thorpe



Sadie Stowell



Schmedly Dixon



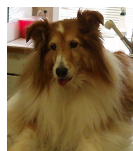
Cally Kerswell



Chloe Neff



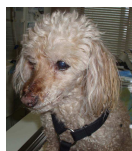
Keelie Hamel



Lady Hamel



Diablo Korum



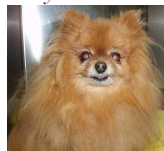
Magnum Spademan



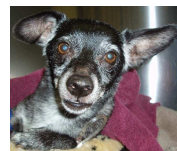
Tucker Cole



Shaffer Pollard



Sable Korum



Sadie Metz

These are the bright smiles of those whose lives have been enriched through dental care ☺
Missing photos: Meisha Brown, Lily & Rusty Wipfli, Abby O'Brien and Misty Gibbons

BITS OF THIS & THAT... HERE AND THERE & EVERYWHERE

I read a few tips in a magazine for those of you thinking about the addition of a dog (or cat) to your household. Funny because of how true they are, I couldn't resist passing them on...

1. If you want someone who'll bring you the paper without first tearing it apart to remove the sports section... *then buy a dog*
2. If you want someone willing to make a fool of himself simply over the joy of seeing you... *then buy a dog*
3. If you want someone who will eat whatever you put in front of him and never says its not quite as good as his mother made it... *then buy a dog*
4. If you want someone who will never touch the remote, doesn't care about football and can sit next to you as you watch romantic movies... *then buy a dog*

5. If you want someone always willing to go out, at any hour, for as long and wherever you want... *then buy a dog*
6. If you want someone who's content to get on your bed just to warm your feet & who you can push off if he snores... *then buy a dog*
7. If you want someone who never criticizes what you do, doesn't care if you are pretty or ugly, fat or thin, young or old, who acts as if every word you say is especially worthy of listening to and loves you unconditionally, perpetually... *then buy a dog*
8. But on the other hand, if you want someone who will never come when you call, ignores you totally when you come home, leaves hair all over the place, walks all over you, runs around all night and only comes home to eat and sleep and acts as if your entire existence is solely to ensure his happiness... *then buy a cat* hehehehehe ☺

What's Happenin at Murdoch Vet Clinic...

spring is in the air... & dandelions will soon be up our noses

PLANTS POISONOUS/TOXIC TO CATS:

Several types of lilies (Japanese, Easter, Tiger, Rubrum, Day, Calla) ♦ Aloe vera ♦ Baby's breath ♦ Azalea ♦ Daffodil ♦ Mother In Law's Tongue ♦ Marble Queen ♦ Geranium ♦ Ferns ♦ Peony ♦ Periwinkle ♦ Rubber Plant ♦ Philodendron ♦ Weeping Fig

PLANTS POISONOUS/TOXIC TO DOGS:

Lilies ♦ Daffodil ♦ Tulip ♦ Gladiolas ♦ Holly ♦ Philodendron ♦ Hyacinth ♦ Onion ♦ Ivy ♦ Clematis ♦ Dieffenbachia ♦ Hyacinth ♦ Hydrangea ♦ Tomato ♦ Bamboo ♦ Castor Bean ♦ Chrysanthemum ♦ Bird of Paradise ♦ Crown of Thorns ♦ Elephant Ears ♦ Yew

PLANTS TOXIC TO HORSES:

Fiddlenecks ♦ Poison Hemlock ♦ Milkweed ♦ Water Hemlock ♦ Horsetail ♦ St. John's Wort ♦ Buttercups ♦ Lupin ♦ Red Maple Tree ♦ Nightshade ♦ Cocklebur ♦ Alsike Clover ♦ Ragwort ♦ Rose Laurel ♦ Hoary Alyssum ♦ Oleander

Manager's Message...

I'm not usually one for winter but since I discovered snowshoeing, I have mixed emotions about the snow melting so early...

Happy Birthday to Shannon

There should be such a thing as age brackets...



Happy Birthday to Kelly

... the larger our numbers, the more \$\$ we get ☺

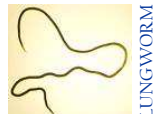


What you might like to know about "COMMON EQUINE PARASITES"



BOTFLY

Eggs are laid on the legs, mane, body or chin of the horse. Botfly larvae are seldom associated with health problems



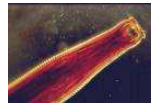
LUNGWORM

Young horses are particularly susceptible. Lungworms lay eggs that are coughed up. Respiratory stress is a common side effect



STOMACH WORM

Larvae are ingested by fly maggots in the manure. Mature flies deposit the larvae on the lips, nostrils, wounds and other moist areas. Larvae can expand a wound and prevent healing, cause conjunctivitis in the eye, gastric and tumor-like growths if eaten



LARGE STRONGYLE

Said to be the most damaging of all parasites. Adults are found in the large intestine. Immature larvae migrate thru the body causing damage to the mesentery artery and restrict blood flow



ASCARID

Also known as roundworms, they can survive in the environment for many years. They migrate from the intestine through the liver to the lungs. Coughing and pneumonia are common



PINWORM

Non-life threatening. Evidence of pinworms exists when horses rub the tops of their tails. Eggs are laid around the rectum, causing itching



TAPEWORM

Animals ingest oribatid mites that live on pastures and infested grain. It is said that tapeworms can cause a blockage at the end of the small intestine, and may be referred to as one type of impaction colic



SMALL STRONGYLE

Non-migratory. Adults do not usually cause much problem, however the larvae burrow into the lining of the colon, causing significant inflammation, weight loss, diarrhea and even death

COME IN AND SEE OUR NEWLY OVERHAULED RETAIL SECTION...

Oatmeal and Aloe Shampoo great for dogs and horses
 Stain & Odor Remover remove those tough smells & spots
 Pill Pockets and Poppers ease the administration of medication
 Small Animal Emergency Kits for safe travelling with your pet
 Horse Dewormer Quest Plus, Quest, Equalan, Panacur & more
 MediCal Royal Canin and Hill's Prescription Diets

Pawguard effective lanolin rub for dry, cracked paws & elbows ☺
 Hypoallergenic Dog Treats
 Toothbrushes, Toothpaste & Breathalyser
 Ear Cleaning Solution for those avid swimmers
 Toe Nail Trimmers & Bloodstop powder for those 'oops' trims
 Self Watering Pet Dishes, Equine Fly Spray, Ecto Spray



...IF WE DON'T HAVE WHAT YOU NEED - JUST ASK!

Closed: Friday April 2nd ~ Monday May 24th ~ Thursday July 1st

DR. CHRISTINE MURDOCH, Owner & Veterinarian
 KELLY M, Registered Animal Health Technician
 KACIE H, Veterinary Assistant
 KAYDEN H, Kennel Attendant

DR. JODYNE GREEN, Associate Veterinarian
 KRISTY J, Registered Animal Health Technician
 CHANDRA M, Administrative Assistant
 SHELDON G, Kennel Attendant and Volunteer

KELLY-ANNE H, Office Manager
 NAVKARAN B, Veterinary & Technician Assistant
 SHANNON C, Administrative Assistant
 DR. BARB V, Locum Veterinarian

DID YOU KNOW . . . A BENGAL TIGER CAN CONSUME AS MUCH AS 88 POUNDS (40KG) OF MEAT IN ONE FEEDING ☺